

PRODUCT : LCD MODULE
MODEL NO : YTS340LAC-01-100C
SUPPLIER : Yes Optoelectronics Co.,Ltd
DATE : Jul.08.2022

SPECIFICATION

Prepared by	Checked	Approved
LIUJUN	WUXIA	SHIJIN

CUSTOMER:
MODEL NO.:

DATE:

Approved	Checked	Department

ADD: No.288 Yueling Road Anshan, Liaoning, CHINA
TEL: 86-412-5211859 FAX: 86-412-5211729 P.C.:114045
E-mail : yes@yes-lcd.com, yeslcd@globalsources.com
Web: <http://www.yes-lcd.com>
<http://www.asiansources.com/sante.com>

CONTENTS

1. General Specifications	4
2. Mechanical Drawing	5
3. PIN Assignment	6
4. Absolute Maximum Rating	7
5. Electrical Characteristics	7
5.1. Recommended Operating Condition	7
5.2. Recommended Driving Condition for Backlight	7
6. Timing Characteristics	8
6.1. AC Electrical Characteristics	8
6.2. DC Electrical Characteristics	13
6.3. Power ON/OFF Sequence	15
7. Optical Characteristics	16
8. Environmental/Reliability Test	19
9. Packing Drawing	20
10. Standard Specifications For Product Quality	21
10.1. Manner of test:	21
10.2. Quality specification	21
10.3. Definition of area	21
10.4. Standard of appearance	22
11. Precautions for Use of LCD Modules	26
11.1. Handling Precautions	26
11.2. Storage Precautions	27
11.3. Others	27
11.4. USING LCD MODULES	27
11.5. The disposal of waste	29
12. Prior Consult Matter	29
13. Factory	29

Revision Record

Rev No.	Rev Date	Contents	Remarks
1.0	2022.07.08	New creation	

1. General Specifications

No.	Item	Contents	Unit
1	Size	3.4	inch
2	Resolution	800RGB*800	
3	Interface	MIPI	
4	Color Depth	16.7	M
5	Technology Type	a-Si	
6	Pixel Pitch	0.1095*0.1095	mm
7	Pixel Arrangement	R.G.B Vertical Stripe	
8	Display Mode	Normally Black, Transmissive, IPS	
9	Viewing Direction	ALL	
10	LCM (W x H x D)	116*116*3.85	mm
11	Active Area (W x H)	87.60*87.60	mm
12	With/Without TSP	With CTP	
13	LED Numbers	8	

Touch Panel Parameter

No.	Features	Details	Note
1	CTP Technology	Mutual capacitor	
2	Input Method	Finger	
3	Touch point	5Point	
4	Positional Accuracy	2.5mm at 4 edges and 1.5mm at center	Unit: mm
5	Cover glass	Soda lime glass, chemically hardened	
6	Hardness	6H	
7	Surface treatment	NO	
8	Optical transmittance	87%	
9	Touch controller	ST1633I	
10	Interface to Host	I2C	
11	I2C Address	0X55	
12	Connection Type	ZIF Connector	

2.Mechanical Drawing

CUSTOMER'S APPROVED:	DATE:	PAGE:
----------------------	-------	-------

NO.	DESCRIPTION	DATE
①	Init Version	2022.07.08
②		
③		
④		

No.	YTS340LAC-01-100C
Ver.	Ver. 1
Drw	刘璞 2022.07.08

Unit:mm	Apv	Chk			
---------	-----	-----	--	--	--

Backlight circuit diagram:

$V_f = 10.8V(\text{min}) - 12V(\text{typ}) - 13.2V(\text{max})$

$I_f = 40\text{mA}$

Dimensions: 116.00 ± 0.2 LENS OD, 96.95 ± 0.1 BL, 88.60 LENS VA, 87.60 AA, 46.65 ± 0.5 , 39.93 ± 0.5 , 35.69 ± 0.5 , 11.55 , 13.70 , 14.20 , 10.55 , 13.70 , 87.60 AA, 88.60 LENS VA, 94.90 ± 0.1 BL, 116.00 ± 0.2 LENS OD, 0.70 LENS, 0.20 OCA, 0.55 SENSOR, 0.175 OCA, 3.85 ± 0.5 LCM, 2.22 ± 0.3 TPT.

Labels: 普通印刷黑色油墨, 保护膜撕手, pull tab, STIFFENER, CONDUCTOR SIDE, $2-00.15$, $2-00\text{MAX}$, 0.30 ± 0.05 , 0.50 ± 0.1 , $P0.5 \times (30-1) = 14.50$, $P0.5 \times 5 = 2.50$, 3.50 ± 0.1 , 3.50 ± 0.3 , 0.35 , 30 , 0.30 , 0.50 .

TPT PIN

PIN	SYMBOL	PIN	SYMBOL
1	LEDA	16	D3P
2	LEDK	17	D3N
3	GND	18	GND
4	DOP	19	GND
5	DON	20	NC
6	GND	21	RESX
7	D1P	22	NC
8	D1N	23	IOVCC
9	GND	24	IOVCC
10	CP	25	NC
11	CN	26	VCI
12	GND	27	VCI
13	D2P	28	NC
14	D2N	29	GND
15	GND	30	GND

CTP PIN TABLE

1	2	3	4	5	6
RESET(3.3V)	WCC(3.3V)	GND	INT(3.3V)	SCL(3.3V)	SDA(3.3V)

1	Operating Voltage:	VCI=2.8V typ, IOVCC=1.8V typ.
2	Resolutions:	800RGB*800
3	Color:	16.7M
4	Interface:	MIP1
5	Display type:	Transmissive IPS NB
6	Viewing Direction:	ALL
7	Operating Temp:	-20°C~70°C
8	Storage Temp:	-30°C~80°C
9	Driver IC:	SC7705
10	CTP Driver IC:	ST1633F
11	Surface Luminance:	600cd/m2(min),500cd/m2(typ)
12	Unspecified tolerance:	±0.3
13	Dimensions with mark:	* are important

3. PIN Assignment

Pin No.	Symbol	I/O	Function	Remark
1	LEDA	P	LED anode.	
2	LEDK	P	LED cathode.	
3	GND	P	Ground.	
4	D0P	I/O	High speed interface data differential signal input/output pins.	
5	D0N	I/O	High speed interface data differential signal input/output pins.	
6	GND	P	Ground.	
7	D1P	I	High speed interface data differential signal input/output pins.	
8	D1P	I	High speed interface data differential signal input/output pins.	
9	GND	P	Ground.	
10	CP	I	High speed interface CLOCK differential signal input pins.	
11	CN	I	High speed interface CLOCK differential signal input pins.	
12	GND	P	Ground.	
13	D2P	I	High speed interface data differential signal input/output pins.	
14	D2N	I	High speed interface data differential signal input/output pins.	
15	GND	P	Ground.	
16	D3P	I	High speed interface data differential signal input/output pins.	
17	D3N	I	High speed interface data differential signal input/output pins.	
18	GND	P	Ground.	
19	GND	P	Ground.	
20	NC	-	No connection.	
21	RESX	I	Reset pin. This signal will reset the device and must be applied to properly initialize the chip.	
22	NC	-	No connection.	
23	IOVCC	P	Power supply for logic circuit.	
24	IOVCC	P	Power supply for logic circuit.	
25	NC	-	No connection.	
26	VCI	P	Power supply for analog circuit.	
27	VCI	P	Power supply for analog circuit.	
28	NC	-	No connection.	
29	GND	P	Ground.	
30	GND	P	Ground.	

PS. For further details, please refer to SC7705 data sheet.

4. Absolute Maximum Rating

AGND = GND = 0V, Ta = 25°C

Item	Symbol	Min	Max	Unit	Remark
Power Voltage	VCI	-0.3	5.5	V	
	IOVCC	-0.3	5.5	V	
Operating Temperature	T _{OPR}	-20	70	°C	
Storage Temperature	T _{STG}	-30	80	°C	

Note1: The absolute maximum rating values of this product are not allowed to be exceeded at any times. Should a module be used with any of the absolute maximum ratings exceeded, the characteristics of the module may not be recovered, or in an extreme case, the module may be permanently destroyed.

5. Electrical Characteristics

5.1. Recommended Operating Condition

AGND = GND = 0V, Ta = 25°C

Item	Symbol	Min	Typ.	Max	Unit	Remark
Power Voltage	VCI	2.5	2.8	3.3	V	
	IOVCC	1.65	1.8	3.3	V	
Input logic high voltage	V _{IH}	0.7IOVCC	-	IOVCC	V	
Input logic low voltage	V _{IL}	GND	-	0.3IOVCC	V	

5.2. Recommended Driving Condition for Backlight

Ta = 25°C

Item	Symbol	Min	Typ.	Max	Unit	Remark
Forward Voltage	V _f	10.8	12.0	13.2	V	
Forward Current	I _f	-	40	-	mA	
Operating Life Time	-	30000	-	-	Hours	

Note 1: Ta means ambient temperature of TFT-LCD module.

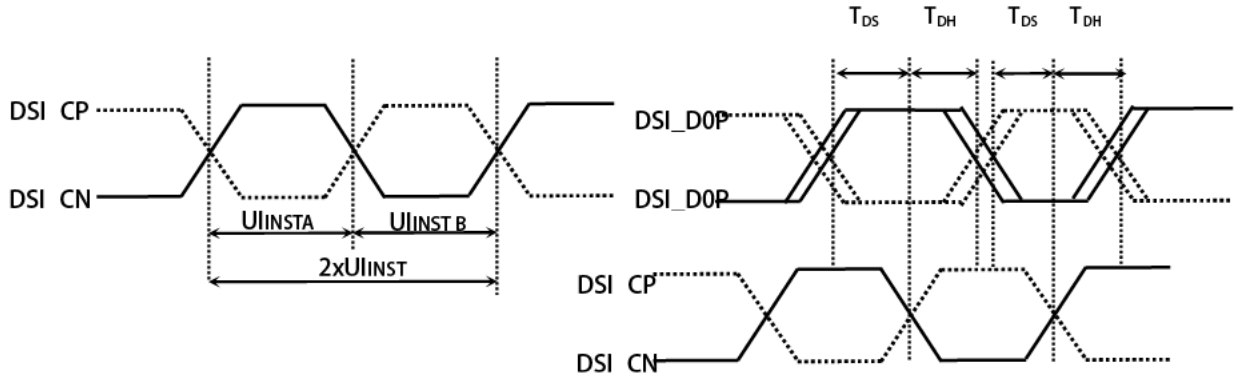
Note 2: If the module is driven by high current or at high ambient temperature & humidity condition. The operating life will be reduced.

Note 3: Operating life means brightness goes down to 50% initial brightness. Minimum operating life time is estimated data.

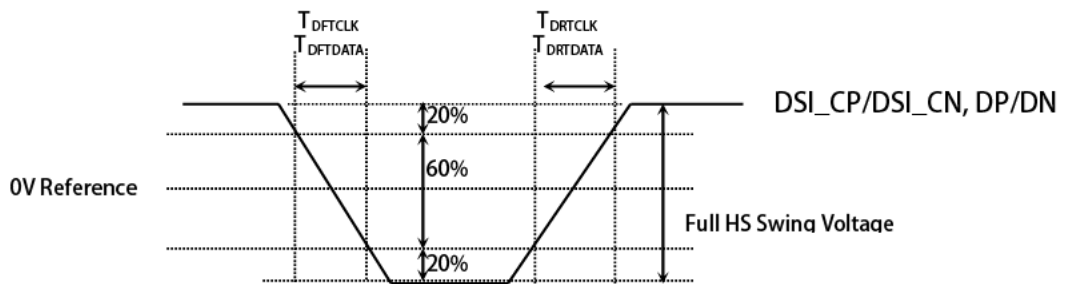
6. Timing Characteristics

6.1. AC Electrical Characteristics

High Speed Mode



DSI clock timing Characteristics



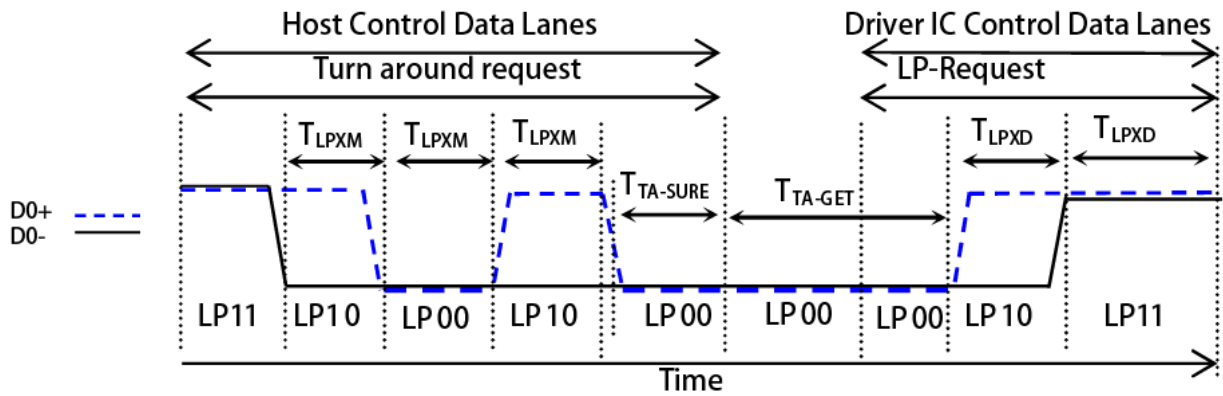
Rising and falling time on clock and data channel

(VSSA=0V, IOVCC=1.65V to 3.3V, VCI=2.5V to 3.3V, T_A = -30 to 70° C)

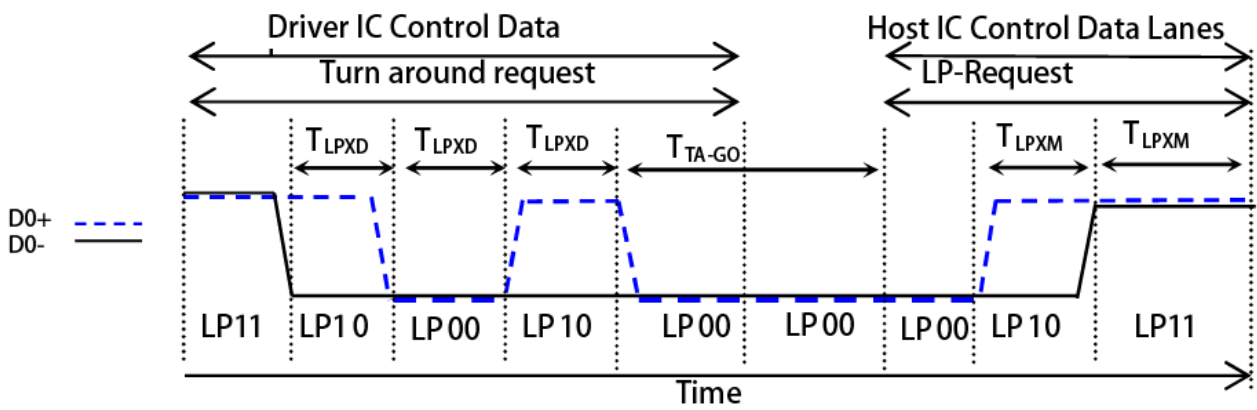
Signal	Item	Symbol	Spec.			Unit
			Min.	Typ.	Max.	
DSI_CP/ DSI_CN	Double UI instantaneous	2xU _{INST}	TBD	-	25	ns
	UI instantaneous	U _{INSTA} U _{INSTB}	TBD	-	12.5	ns
DP/DN	Data to clock setup time	T _{DS}	0.15xUI	-	-	ps
	Data to clock hold time	T _{DH}	0.15xUI	-	-	ps
DSI_CP/ DSI_CN	Differential rise time for clock	T _{DRTCLK}	150	-	0.3UI	ps
	Differential fall time for clock	T _{DFTCLK}	150	-	0.3UI	ps
DP/DN	Differential rise time for data	T _{DRTDATA}	150	-	0.3UI	ps
	Differential fall time for data	T _{DFTDATA}	150	-	0.3UI	ps

DSI High Speed Mode characteristics

Low Power Mode



BTA from HOST to Display module Timing



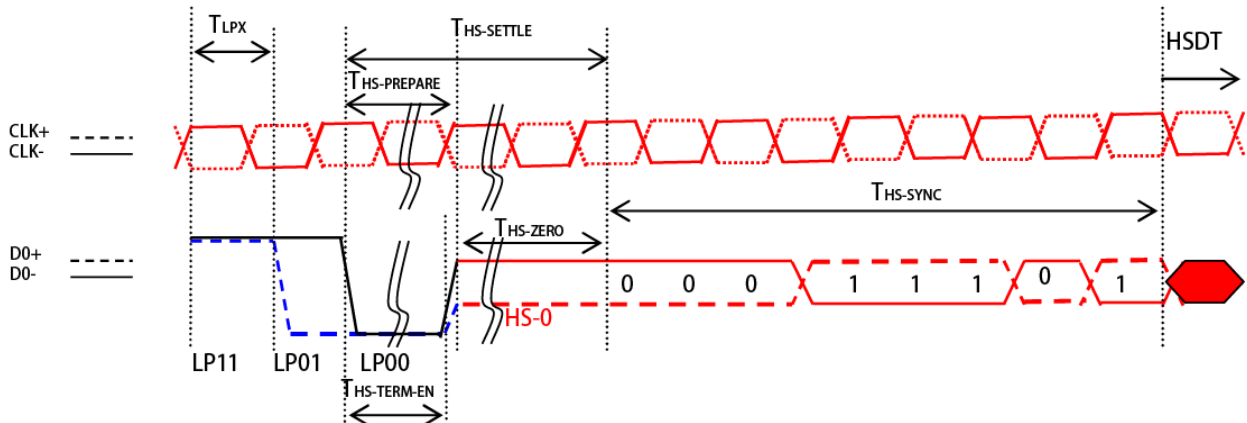
BTA from Display module Timing to HOST

(VSSA=0V, IOVCC=1.65V to 3.3V, VCI=2.3V to 3.3V, T_A = -30 to 70° C)

Signal	Item	Symbol	Spec.			Unit
			Min.	Typ.	Max.	
DSI_D0P/ DSI_D0P	Length of LP-00/LP01/LP10/LP11 Host \boxtimes Display module	T _{LPXM}	50	-	-	ns
	Length of LP-00/LP01/LP10/LP11 Display module \boxtimes Host	T _{LPXD}	50	-	-	ns
	Time-out before the MPU start driver	T _{TA-SURE}	T _{LPXD}	-	2xT _{LPXD}	ns
	Time to drive LP-00 by display module	T _{TA-GET}	5xT _{LPXD}	-	-	ns
	Time to drive LP-00 after turnaround request Host	T _{TAGO}	4xT _{LPXD}	-	-	ns

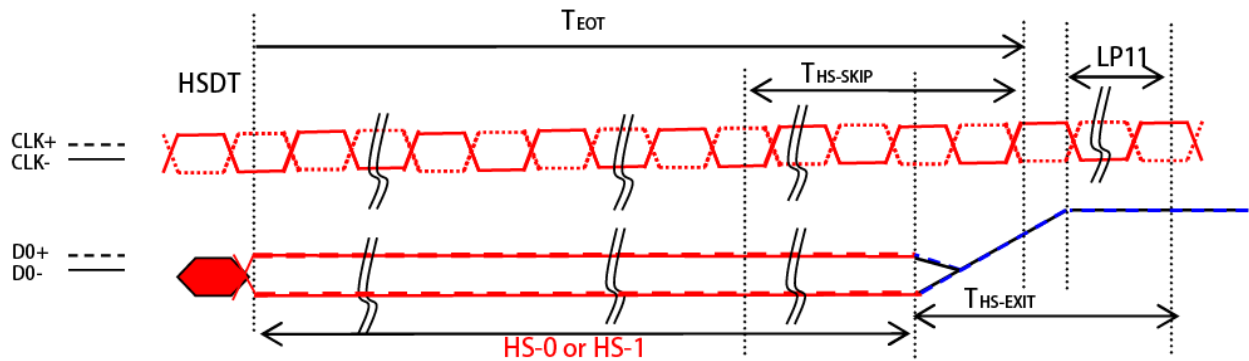
DSI Low Power Mode characteristics

DSI BURSTS



Signal	Item	Symbol	Spec.			Unit
			Min.	Typ.	Max.	
DSI_D0P/ DSI_D0P	Length of LP-00/LP01/LP10/LP11	T _{LPX}	50	-	-	ns
	Time to Driver LP-00 to prepare for HS transmission	T _{HS-PREPARE}	40+4UI	-	85+6UI	ns
	Time to enable data receiver linetermination	T _{HS-TERM-EN}	-	-	35+4xUI	ns
	Time to drive LP-00 by display module	T _{TA-GET}	5xT _{LPXD}	-	-	ns
	Time to drive LP-00 after turnaround request Host	T _{TAGO}	4xT _{LPXD}	-	-	ns

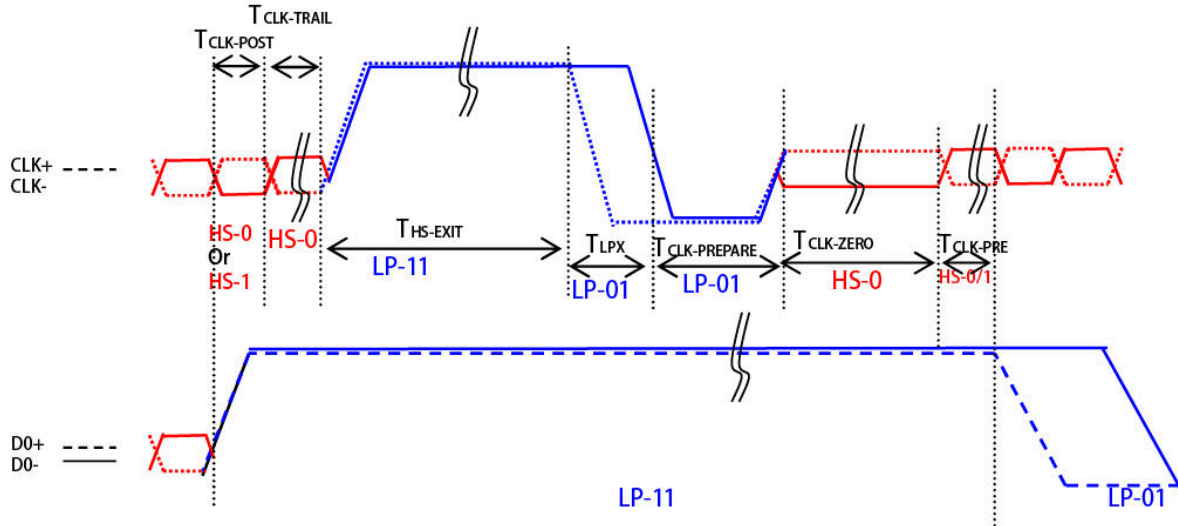
DSI Low Power Mode to High Speed Mode Timing



NOTE:
If the last bit is HS-0, the transmitter changes from HS-0 to HS-1
If the last bit is HS-1, the transmitter changes from HS-1 to HS-0

Signal	Item	Symbol	Spec.			Unit
			Min.	Typ.	Max.	
DSI_D0P/ DSI_D0P	Time-Out at Display Module to Ignore Transition Period of EoT	T _{HS-SKIP}	40	-	55+4xUI	ns
	Time to Driver LP-11 after HS Burst	T _{HS-EXIT}	100	-	-	ns

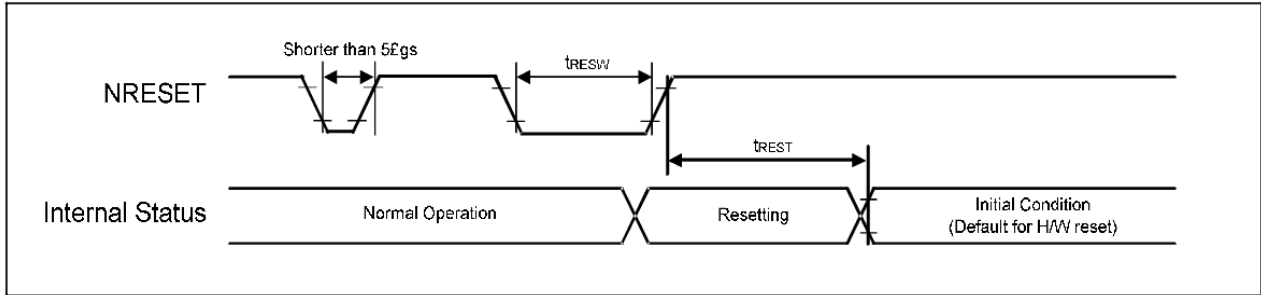
DSI Low Power Mode to High Speed Mode Timing



Signal	Item	Symbol	Spec.			Unit
			Min.	Typ.	Max.	
DSI_CP/ DSI_CN	Time that the MCU shall continue sending HS clock after the last associated Data Lane has transitioned to LP mode	T _{CLK-POST}	60+52xUI	-	-	ns
	Time to drive HS differential state after last payload clock bit of a HS transmission burst	T _{CLK-TRAIL}	60	-	-	ns
	Time to drive LP-11 after HS burst	T _{HS-EXIT}	100	-	-	ns
	Time to drive LP-00 to prepare for HS transmission	T _{CLK-PREPARE}	38	-	95	ns
	Time-out at Clock Lane Display Module to enable HS Termination	T _{CLK-TERM-EN}	-	-	38	ns
	Minimum lead HS-0 drive period before starting Clock	T _{CLK-PREPARE} + T _{CLK-ZERO}	300	-	-	ns
	Time that the HS clock shall be driven prior to any associated data Lane beginning the transition from LP to HS mode	T _{CLK-PRE}	8xUI			

Clock Lanes High Speed Mode to/from Low Power Mode Timings

Reset input timing



Reset input timing

Symbol	Parameter	Related Pins	Spec.			Note	Unit
			Min.	Typ.	Max.		
tRESW	Reset low pulse width ⁽¹⁾	NRESET	10	-	-	-	μs
tREST	Reset complete time ⁽²⁾	-	5	-	-	When reset applied during SLPIN mode	ms
		-	120	-	-	When reset applied during SLPOUT mode	ms

Reset input timing

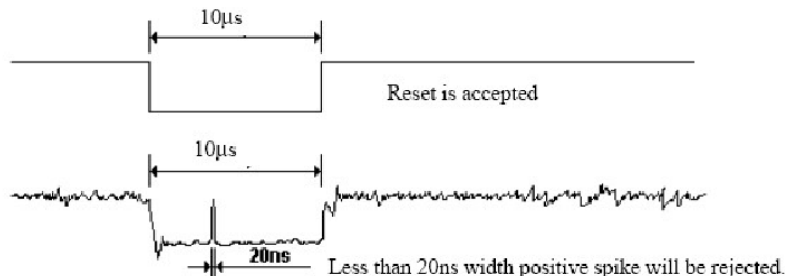
Note1: Spike due to an electrostatic discharge on NRESET line does not cause irregular system reset according to the following table.

NRESET Pulse	Action
Shorter than 5 μs	Reset Rejected
Longer than 10 μs	Reset
Between 5 μs and 10 μs	Reset Start

Note2: During the resetting period, the display will be blanked (The display is entering blanking sequence, which Maximum time is 120 ms, when Reset Starts in Sleep Out –mode. The display remains the blank state in Sleep In –mode) and then return to Default condition for H/W reset.

Note3: During Reset Complete Time, ID and VCOM value in OTP will be latched to internal register during this period. This loading is done every time when there is H/W reset complete time (tREST) within 5ms after a rising edge of NRESET.

Note4: Spike Rejection also applies during a valid reset pulse as shown as below:



Note5: It is necessary to wait 5msec after releasing NRESET before sending commands. Also Sleep Out command cannot be sent for 120msec.

6. 2.DC Electrical Characteristics

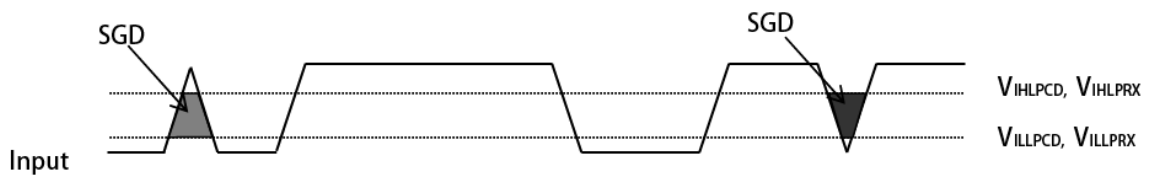
Basic Characteristics

Parameter	Symbol	Conditions	Spec.			Unit
			Min.	Typ.	Max.	
Power & Operating Voltages						
Logic Operating voltage	IOVCC	I/O supply voltage	1.65	1.8	3.3	V
Analog Operating voltage	VCI	Operation voltage	2.5	2.8	3.3	
Input / Output						
Logic High level input voltage	VIH	-	0.7IOVCC	-	IOVCC	V
Logic Low level input voltage	VIL	-	VSSD	-	0.3IOVCC	
Logic High level output voltage	VOH	IOH = -1.0mA	0.8IOVCC	-	IOVCC	
Logic Low level output voltage	VOL	IOL = +1.0mA	VSSD	-	0.2IOVCC	
Input leakage current	IIL	-	-1	-	1	mA
DC/DC Converter Operation						
VSP booster voltage	VSP	IVSP=1mA	4.5		6.2	V
VSN booster voltage	VSN	IVSN=-1mA	-6.2		-4.5	
VCL booster voltage	VCL	Ivcl=-1mA	-3.3		-2.5	
VGH booster voltage	VGH	Ivgh=1mA	10		20	
VGL booster voltage	VGL	Ivgl=-1mA	-15		-7.5	
VGH and VGL difference	VGH-VGL	-	-	-	32	
Oscillator tolerance	OSC	25°C	-3		3	%
Source Driver						
Gamma reference voltage	VSPR	-	3.3		5.6	V
	VSNR	-	-5.6		-3.3	
Output voltage deviation	DVOS	VSSD+1.0 ~ VSPROUT-1.0	-	-	+/- 20	mV
		VSSD+0.1V ~ VSSD+1.0 VSPR-1.0 ~ VSPR-0.1V	-	-	+/- 50	
Output offset voltage	Voff	-			+/-50	mV

DSI DC Characteristics

LP Mode

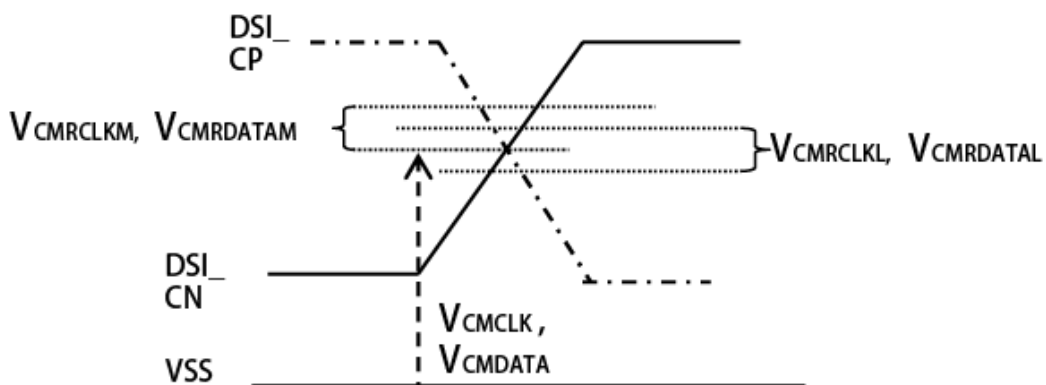
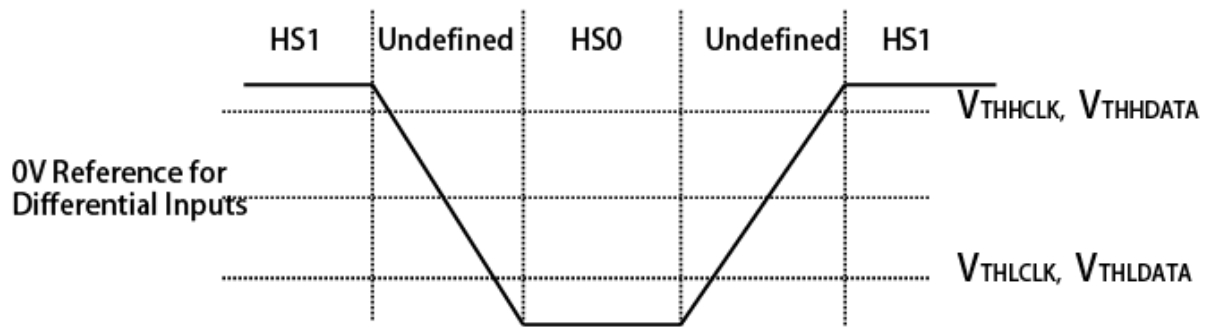
Parameter	Symbol	Conditions	Spec.			Unit
			Min.	Typ.	Max.	
Logic high level input voltage	VIHLPCD	LP-CD	450	-	1350	mV
Logic low level input voltage	VILLPCD	LP-CD	0	-	200	mV
Logic high level input voltage	VIHLPRX	LP-RX(CLK, D0)	880	-	1350	mV
Logic low level input voltage	VILLPRX	LP-RX(CLK, D0)	0	-	550	mV
Logic low level input voltage	VILLPRXULP	LP-RX(CLK ULP mode)	0	-	300	mV
Logic high level output voltage	VOHLPTX	LP-TX(D0)	1.1	-	1.3	V
Logic low level output voltage	VOLLPTX	LP-TX(D0)	-50	-	50	mV
Logic high level input current	VIH	LP-CD, LP-RX	-	-	10	uA
Logic low level input current	VIL	LP-CD, LP-RX	-10	-	-	uA
Input pulse rejection	SGD	DSI-CLK+/-, DSI-D0+/-1	-	-	300	Vps



Input glitch rejections of low-power receivers

High Speed Mode

Parameter	Symbol	Conditions	Spec.			Unit
			Min.	Typ.	Max.	
Input common mode	V_{CMCLK} V_{CMDATA}	DSI_CP/DSI_CN DSI_D0P/DSI_D0P	70	-	330	mV
Input common mode variation <450 MHz	$V_{CMRCLKL}$ $V_{CMRDATAL}$	DSI_CP/DSI_CN DSI_D0P/DSI_D0P	-50	-	50	mV
Input common mode variation >450 MHz	$V_{CMRCLKM}$ $V_{CMRDATAM}$	DSI_CP/DSI_CN DSI_D0P/DSI_D0P	-	-	100	mV
Low-level differential Input threshold	V_{THLCLK} $V_{THLDATA}$	DSI_CP/DSI_CN DSI_D0P/DSI_D0P	-70	-	-	mV
High-level differential Input threshold	V_{THHCLK} $V_{THHDATA}$	DSI_CP/DSI_CN DSI_D0P/DSI_D0P	-	-	70	mV
Single ended input low voltage	V_{ILHS}	DSI_CP/DSI_CN DSI_D0P/DSI_D0P	-40	-	-	mV
Single ended input high voltage	V_{IHHS}	DSI_CP/DSI_CN DSI_D0P/DSI_D0P	-	-	460	mV
Differential input termination resistor	R_{TERM}	DSI_CP/DSI_CN DSI_D0P/DSI_D0P	80	100	125	Ω
Single-ended threshold voltage for termination enable	V_{TERMEN}	DSI_CP/DSI_CN DSI_D0P/DSI_D0P	-	-	450	mV
Termination capacitor	C_{TERM}	DSI_CP/DSI_CN DSI_D0P/DSI_D0P	-	-	-	pF

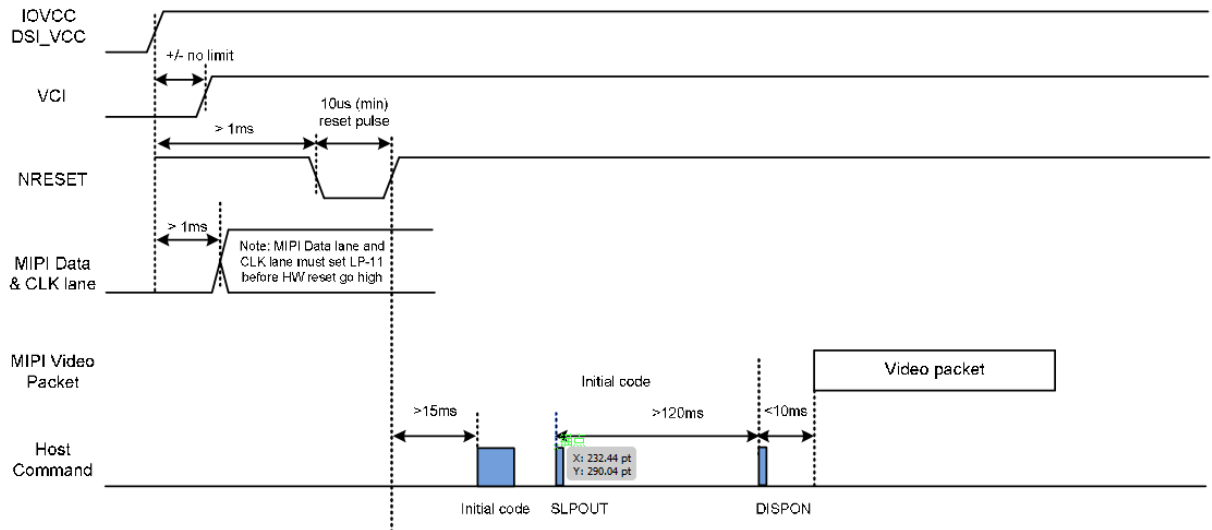


Differential voltage range and Command mode voltage

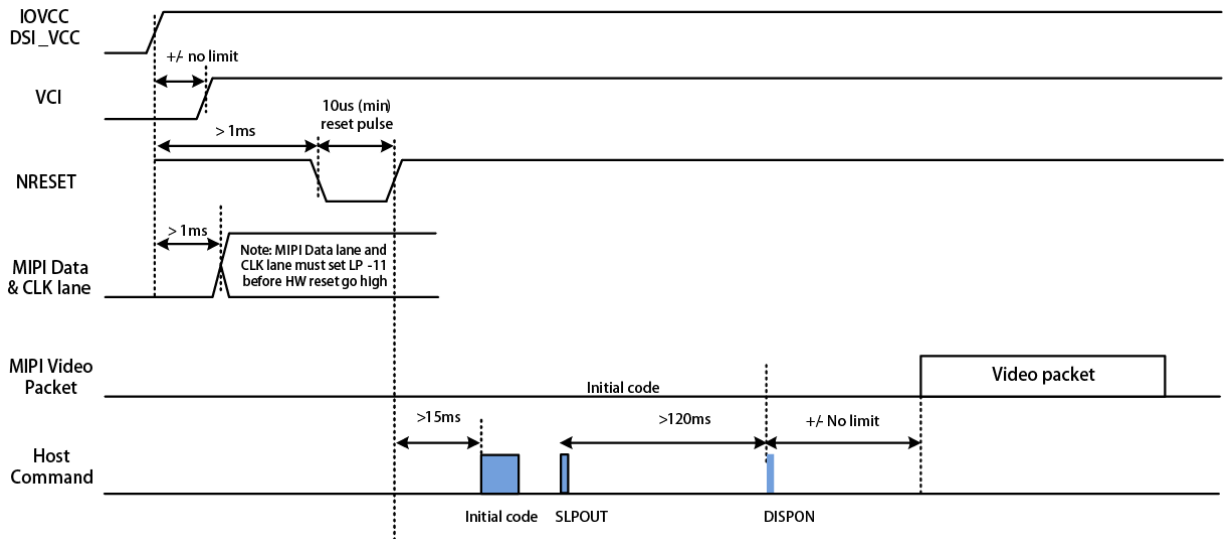
6. 3.Power ON/OFF Sequence

Power on Timing

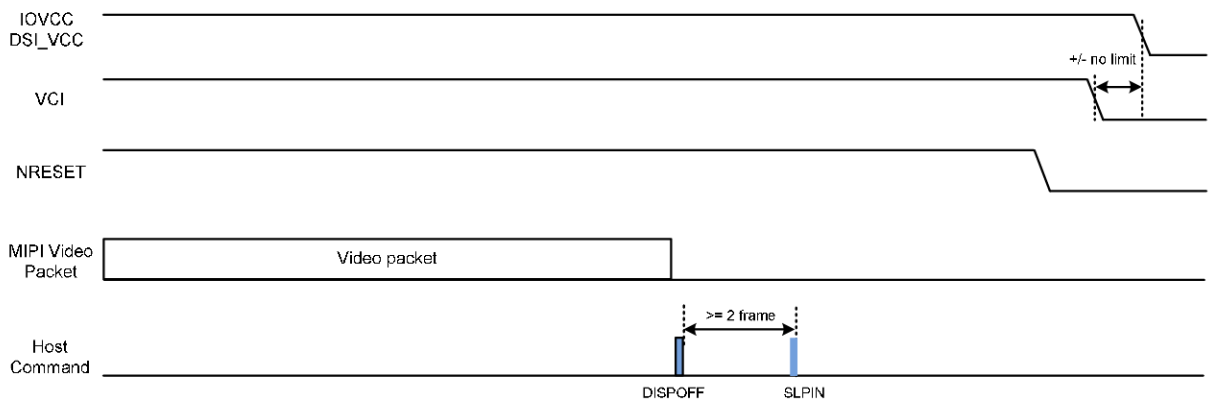
ESD_WHITE_EN=0



ESD_WHITE_EN=1



Power off Timing



7. Optical Characteristics

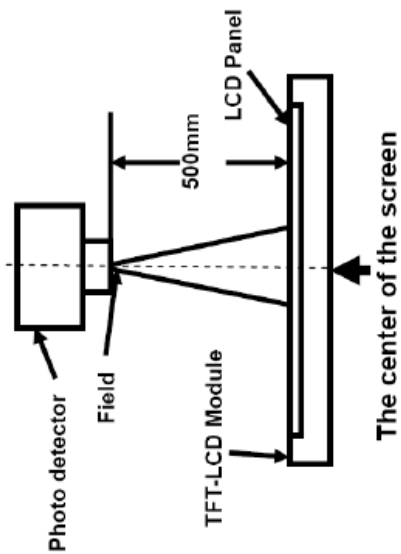
Item	Symbol	Condition	Min	Typ	Max	Unit	Remark
View Angles	θT	CR \geq 10	80	85	-	Degree	Note 2
	θB		80	85	-		
	θL		80	85	-		
	θR		80	85	-		
Contrast Ratio	CR	$\theta = 0^\circ$	(1000)	(1200)	-		Note 1 Note 3
Response Time	T _{ON} +T _{OFF}	25°C	-	30	35	ms	Note 1 Note 4
Chromaticity	W _x	x	(0.252)	(0.292)	(0.332)		Note 1 Note 5
	W _y	y	(0.293)	(0.333)	(0.373)		
	R _x	x	(0.627)	(0.667)	(0.707)		
	R _y	y	(0.283)	(0.323)	(0.363)		
	G _x	x	(0.231)	(0.271)	(0.311)		
	G _y	y	(0.551)	(0.591)	(0.631)		
	B _x	x	(0.094)	(0.134)	(0.174)		
B _y	y	(0.081)	(0.121)	(0.161)			
Uniformity	U		75	-	-	%	Note 5
Luminance	L		200	250	-	cd/m ²	Note 1 Note 5

Test Conditions:

1. If=40mA(Backlight current), VCI= 2.8 V, the ambient temperature is 25°C.
2. The test systems refer to Note 2.

Note1: Definition of optical measurement system.

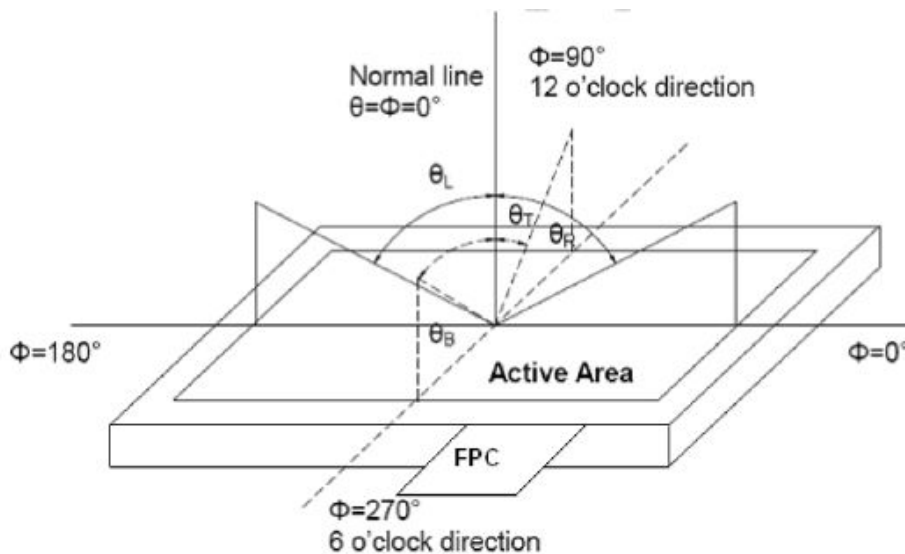
The optical characteristics should be measured in dark room. After 5Minutes operation, the optical properties are measured at the center point of the LCD screen. ALL input terminals LCD panel must be ground when measuring the center area of the panel.



Item	Photo detector	Field
Contrast Ratio	CS1000	1°
Luminance		
Lum Uniformity		
Chromaticity	CS1000	
Response Time	DMS703	-

Note2: Definition of viewing angle range and measurement system.

Viewing angle is measured at the center point of the LCD by CONOSCOPE (DMS703)



Note3: Definition of contrast ratio

White state”:The state is that the LCD should drive by V_{white} .

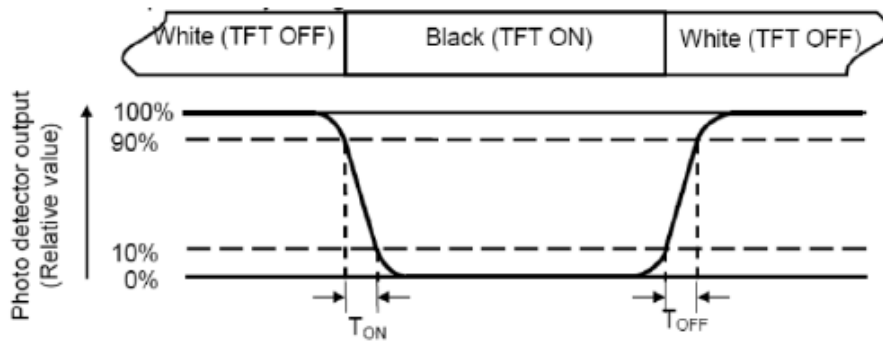
$$\text{Contrast ratio(CR)} = \frac{\text{Luminance measured when LCD is on the "White" state}}{\text{Luminance measured when LCD is on the "Black" state}}$$

“Black state”:The state is that the LCD should drive by V_{black} .

V_{white} : To be determined V_{black} : To be determined

Note4: Definition of Response time

The response time is defined as the LCD optical switching time interval between “White”state and “Black” state. Rise time (T_{ON})is the time between photo detector output intensity changed from 90% to 10%.And fall time (T_{OFF})is the time between photo detector output intensity changed from 10% to90%.



Note5: Definition of color chromaticity (CIE1931)

Color coordinates measured at center point of LCD.

Color coordinates are subject to actual measurement.

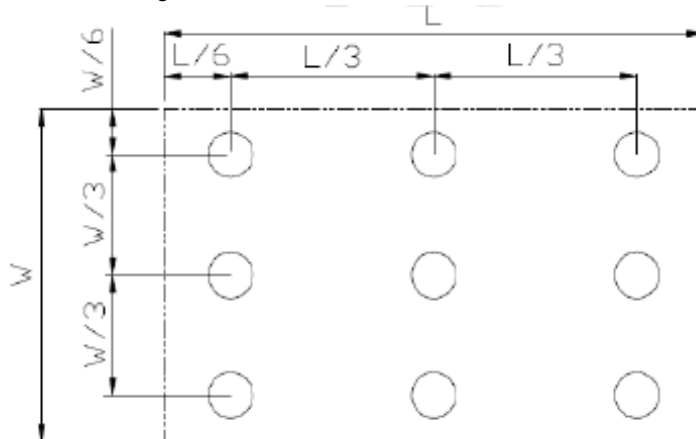
If the data has a bracket, that means reference value of TFT panel or one sample of module, the values of module TBD.

Note6: Definition of Luminance Uniformity

Active area is divided into 9 measuring areas(Refer Fig.2).Every measuring point is placed at the center of each measuring area.

Luminance Uniformity (U)=Lmin/Lmax

L-Active area length W-Active area width



L max: The measured Maximum luminance of all measurement position.

L min: The measured Minimum luminance of all measurement position.

Note7: Definition of luminance: Measure the luminance of white state at center point.

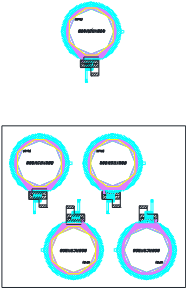
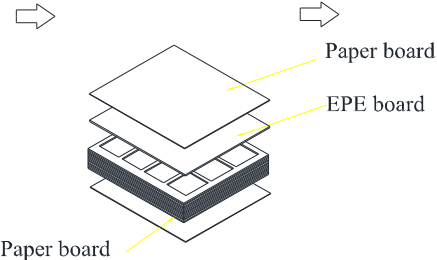
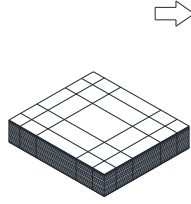
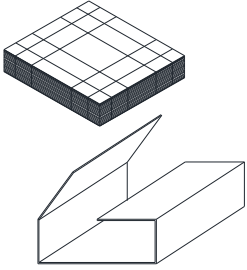
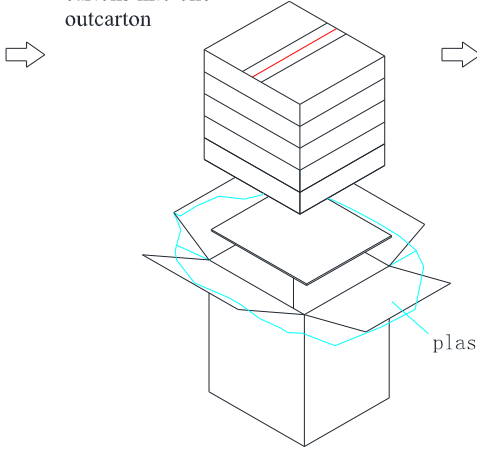
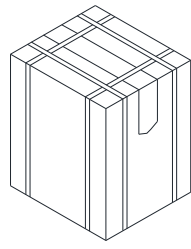
8. Environmental/Reliability Test

No.	Test Item	Test Condition	Inspection after test
1	High Temperature Storage	80±2℃/240 hours	Inspection after 2~4hours storage at room temperature, the sample shall be free from defects: 1.Air bubble in the LCD; 2.Sealleak; 3.Non-display; 4.Missing segments; 5.Glass crack; 6.Current Idd is twice higher than initial value.
2	Low Temperature Storage	-30±2℃/240 hours	
3	High Temperature Operating	70±2℃/240 hours	
4	Low Temperature Operating	-20±2℃/240 hours	
5	Temperature Cycle	-30℃~ 25℃~ 80℃ × 10cycles (30min.) (5min.) (30min.)	
6	Damp Proof Test	40℃±5℃×90%RH/240 hours	
7	Vibration Test	Frequency : 10Hz~55Hz~10Hz Amplitude : 1.5mm, X, Y, Z direction for total 3hours (Packing condition)	
8	Dropping test	Drop to the ground from 1m height, one time,every side of carton. (Packing condition)	
9	ESD test	Voltage:±8KV R: 330Ω C: 150pF Air discharge, 10time Voltage:±6KV R: 330Ω C: 150pF Contact discharge, 10time	

Remark:

1. The test samples should be applied to only one test item.
2. Sample size for each test item is 5~10pcs.
3. For Damp Proof Test, Pure water(Resistance> 10MΩ) should be used.
4. In case of malfunction defect caused by ESD damage, if it would be recovered to normal state after resetting, it would be judge as a good part.
5. Failure Judgment Criterion: Basic Specification, Electrical Characteristic, Mechanical Characteristic, Optical Characteristic.
6. Please use automatic switch menu(or roll menu) testing mode when test operating mode.

9. Packing Drawing

<i>CUSTOMER'S APPROVED:</i>	<i>DATE: 2022.07.11</i>	<i>PAGE: 1/1</i>
<p>PRODUCT PART NO.: YTS340LAC-01-100C</p> <p>PACKING TYPE: BY EPE TRAY(T340LAC-01-100A)</p>		
<p>PACKLING ORDER:</p> <div style="display: flex; justify-content: space-around;"> <div style="width: 30%;"> <p>1) Putting 4 pcs Modules on each EPE tray.</p>  </div> <div style="width: 30%;"> <p>2) Putting 7 pcs EPE trays together with EPE paper on the top of EPE tray.</p>  </div> <div style="width: 30%;"> <p>3) Assembling the boards and the tray together with adhesive tape</p>  </div> </div>		
<div style="display: flex; justify-content: space-around;"> <div style="width: 30%;"> <p>4) Putting in the inner small carton (TYPE:H82)</p>  </div> <div style="width: 30%;"> <p>5) Putting 5 small cartons into one outcarton</p>  </div> <div style="width: 30%;"> <p>6) Packing finished</p>  </div> </div>		
<p>Note: 4 pcs in a tray, 7 trays in a inner carton,5 inner cartons in a out carton, so 4x7x5=140pcs/Outcarton</p> <p>Dimension (Small carton) : 385*325*87mm Dimension (Out carton) : 394*344*470mm</p>		
NO. YTS340LAC-01-100C	Ver. 1	Drw: Chk: Apv:
ANSHAN YES OPTOELECTRONICS DISPLAY CO., LTD		

10. Standard Specifications For Product Quality

10.1. Manner of test:

10.1.1 The test must be under 40W fluorescent light, and the distance of view must be at 35±5cm

10.1.2 Room temperature 25±5°C Humidity: (65±5)%RH.

10.1.3 If the product is uneven and bright spot, use 2%ND filter to check and confirm. Not visible, OK.

10.1.4 Inspection Angle:

The vision of inspector should be perpendicular to the surface of the Module.

10.1.5 Inspection time :

Perceptibility Test Time: 20 seconds max.

10.2. Quality specification

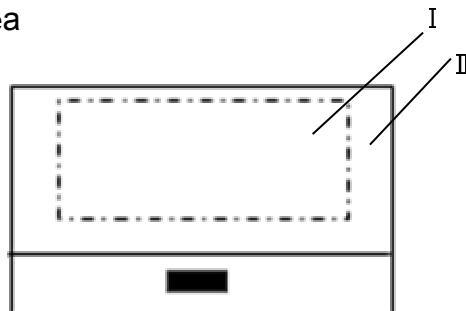
It shall be based on GB2828, inspection level II.

	IETM	CHECK LEVEL	AQL
MAJOR (MA)	1.Liquid crystal leakage 2.Wrong polarizer 3.Outside dimension 4. Bright dot,Dark dot 5. Display abnormal 6. Glass crack	II	0.65
MINOR (MI)	1. Spot Defect (Including black spot,white spot,pinhole,foreign particle,bubbles,hurt) 2. fragment 3. Line Defect (Including black line,white line,scratch) 4. Incision defect 5. Newton's ring 6. Other visual defects	II	1.0

10.3 Definition of area

10.3.1 I area: viewing area


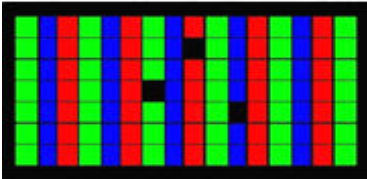
II area: outside viewing area



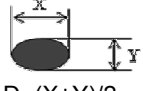
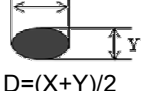
10.4. Standard of appearance test for I area: (unit: mm)

NOTE : Defect ignore for II area.

10.4.1 Bright/Dark Dots explain

Name	Explain	Definition
Bright dot	<p>Dots appear bright and unchanged in size in which LCD panel is displaying under black pattern</p> 	<p>The definition of dot: The size of a defective dot over 1/2 of single pixel dot is regarded as one defective dot .</p> <p>Note:One pixel consists of 3 sub-pixels, including R,G, and B dot.(Sub-pixel = Dot)</p>
Dark dot	<p>Dots appear dark and unchanged in size in which LCD panel is displaying under pure red, green, blue pattern.</p> 	
Adjacent Dot	<p>Adjacent two sub-pixel are defect (define two dot defect)</p>	




10.4.2 Inspection standard

No	Items	Criterion				Checking manner	Defect classes
		LCD≤4.3"	4.3"<LCD<7"	7"≤LCD≤12"	LCD> 12"		
1	Bright/dark dot	Bright dot: N≤2 Dark dot: N≤3 Total: N≤4	Bright dot: N≤3 Dark dot: N≤4 Total: N≤6	Bright dot: N≤4 Dark dot: N≤5 Total: N≤8	Bright dot: N≤5 Dark dot: N≤6 Total: N≤10	Checking with eyes	MAJ
		<p>The distance between the two defect dots shall be greater than 5mm The distance between two defect dots above 7 inches shall be more than 10 mm</p>					
		<p>Note: Adjacent dot defect N≤0</p>					
2	Spot defects (black and white spot, pinhole, foreign matter, dent, backlight foreign matter)  $D=(X+Y)/2$	D≤0.15 Ignore 0.15<D≤0.3 N≤3 0.3<D N=0	D≤0.2 Ignore 0.2<D≤0.5 N≤4 0.5<D N=0	D≤0.2 Ignore 0.2<D≤0.5 N≤5 0.5<D N=0	D≤0.2 Ignore 0.2<D≤0.5 N≤6 0.5<D N=0	Checking with eyes	MIN
		Bubble  $D=(X+Y)/2$	D≤0.2 Ignore 0.2<D≤0.5 N≤3 0.5<D N=0	D≤0.2 Ignore 0.2<D≤0.5 N≤4 0.5<D N=0	D≤0.2 Ignore 0.2<D≤0.5 N≤5 0.5<D N=0		

No	Items	Criterion				Checking manner	Defect classes
		LCD≤4.3"	4.3"<LCD<7"	7"≤LCD≤12"	LCD>12"		
4	Line defects(black and white line, backlight foreign matter etc.) 	W≤0.03 Ignore 0.03<W≤0.06 L≤5 N≤3 W>0.06 L>5 N=0	W≤0.03 Ignore 0.03<W≤0.1 L≤5 N≤4 W>0.1 L>5 N=0	W≤0.03 Ignore 0.03<W≤0.1 L≤5 N≤5 W>0.1 L>5 N=0	W≤0.03 Ignore 0.03<W≤0.1 L≤5 N≤6 W>0.1 L>5 N=0	Checking with eyes	MIN
5	Scratch 	W≤0.03 Ignore 0.03<W≤0.2 1.0<L≤5.0 N≤3 W>0.2 L>5 N=0	W≤0.03 Ignore 0.03<W≤0.2 1.0<L≤5.0 N≤4 W>0.2 L>5 N=0	W≤0.03 Ignore 0.03<W≤0.2 1.0<L≤5.0 N≤5 W>0.2 L>5 N=0	W≤0.03 Ignore 0.03<W≤0.2 1.0<L≤5.0 N≤6 W>0.2 L>5 N=0	Checking with eyes	MIN
6	Display abnormal	Not allowed				Checking with eyes	MAJ
7	Outside dimension	Accord with drawing				Calipers	MAJ
8	Glass crack	Not allowed				Checking with eyes	MAJ
9	Leak	Not allowed				Checking with eyes	MAJ
10	Comer and side fragment 			1. Comer fragment: X , Y≤1mm Z≤T/2 allowed 2. Side fragment: X≤2.0mm Y≤1mm Z≤T/2 allowed		Calipers& Eyes	MIN
11	Crack 			NG		Eyes	MAJ
12	Newton's ring (CTP or Cover board) 			Newton's ring < 1/9 area ,after lightened ,no influence on words and lines		Checking with eyes	MIN

TP 标准

No	Items	Phenomenon/picture	Criterion	Checking manner	Defect class
1	Outside dimension		Accord with drawing	Calipers& Eyes	MIN
2	Color deviation	Difference of ink color	Obvious deviation compared with samples	Eyes	MIN
3	Ink pinhole	<p>油墨针孔</p>	<p>No any holes near VA side 3mm Out of VA: D≤0.15mm N≤1 ,no present in reflection condition.</p>	Eyes Film	MIN
4	Ink saw tooth	<p>印刷锯齿</p>	W≤0.15mm N=1	Eyes Film	MIN
5	Ink light leakage	<p>油墨漏光</p>	<p>1、 width of light leakage at the edge area ≤0.15mm OK 2、 width of light leakage at the edge area >0.15mm NG</p>	Eyes Film	MIN
6	Cover glass profile		No ink, adhesive, oil stain, etc.	Eyes	MIN
7	IR(LED)dot/black-white dot		<p>φ≤0.2、 N≤1 0.15 < φ、 not allowed</p>	Eyes& Film	MIN
8	IR(LED)dot black-white dot/different color		no present when use all viewing angle to determine at 35cm ,allowed	Eyes	MIN
9	Shooting hole		<p>φ≤0.2、 N≤1 0.15 < φ、 not allowed</p>	Eyes& Film	MIN

10	LOGO/ICON black-white dot		Diagram clear $\phi \leq 0.2$, $N \leq 1$	Eyes& Film	MIN
11	FPC warped	FPC翘曲 	OK	Eyes	MIN
12	FPC broken, stained, oxidation	FPC折伤 	NG	Eyes	MAJ
13	Stain		No evident finger print, oil print, gelatinoids, etc.	Eyes	MIN
14	Sponge		Presented in AA area. NG	Eyes	MIN
15	Protection foil	Finished Protection foil	<p>1、 Protection foil stain: In normal inspection condition ,finger print, pen print and gelatinoids are presented. NG</p> <p>2、 Bubble≤ 5.0mm ,or according to client's limited sample</p> <p>3、 Protection foil worn and warped. NG</p> <p>4、 Scratch: $W \leq 0.10$mm, ignore length; 0.10mm $< W \leq 0.20$mm, $L \leq 30$mm, and $N \leq 4$, $d > 15$mm; OK; $L > 30$mm or $W > 0.20$mm;NG</p>	Eyes& Film	MIN

11. Precautions for Use of LCD Modules

11.1 Handling Precautions

- (1) The display panel is made of glass and polarizer. As glass is fragile. It tends to become or chipped during handling especially on the edges. Please avoid dropping or jarring. Do not subject it to a mechanical shock by dropping it or impact.
 - (2) If the display panel is damaged and the liquid crystal substance leaks out, be sure not to get any in your mouth. If the substance contacts your skin or clothes, wash it off using soap and water.
 - (3) Do not apply excessive force to the display surface or the adjoining areas since this may cause the color tone to vary. Do not touch the display with bare hands. This will stain the display area and degraded insulation between terminals (some cosmetics are determined to the polarizer).
 - (4) The polarizer covering the display surface of the LCD module is soft and easily scratched. Handle this polarizer carefully. Do not touch, push or rub the exposed polarizer with anything harder than an HB pencil lead (glass, tweezers, etc.). Do not put or attach anything on the display area to avoid leaving marks on. Condensation on the surface and contact with terminals due to cold will damage, stain or dirty the polarizer. After products are tested at low temperature they must be warmed up in a container before coming is contacting with room temperature air.
 - (5) If the display surface becomes contaminated, breathe on the surface and gently wipe it with a soft dry cloth. If it is heavily contaminated, moisten cloth with one of the following solvents
 - Isopropyl alcohol
 - Ethyl alcohol
 - Do not scrub hard to avoid damaging the display surface.
 - (6) Solvents other than those above-mentioned may damage the polarizer. Especially, do not use the following.
 - Water
 - Ketone
 - Aromatic solvents

Wipe off saliva or water drops immediately, contact with water over a long period of time may cause deformation or color fading. Avoid contacting oil and fats.
 - (7) Exercise care to minimize corrosion of the electrode. Corrosion of the electrodes is accelerated by water droplets, moisture condensation or a current flow in a high-humidity environment.
 - (8) Install the LCD Module by using the mounting holes. When mounting the LCD module make sure it is free of twisting, warping and distortion. In particular, do not forcibly pull or bend the I O cable or the backlight cable.
 - (9) Do not attempt to disassemble or process the LCD module.
 - (10) NC terminal should be open. Do not connect anything.
 - (11) If the logic circuit power is off, do not apply the input signals.
 - (12) Electro-Static Discharge Control, Since this module uses a CMOS LSI, the same careful attention should be paid to electrostatic discharge as for an ordinary CMOS IC. To prevent destruction of the elements by static electricity, be careful to maintain an optimum work environment.
 - Before remove LCM from its packing case or incorporating it into a set, be sure the module and your body have the same electric potential. Be sure to ground the body when handling the LCD modules.
 - Tools required for assembling, such as soldering irons, must be properly grounded. make certain the AC power source for the soldering iron does not leak. When using an electric screwdriver to attach LCM, the screwdriver should be of ground potentiality to minimize as much as possible any transmission of electromagnetic waves produced sparks coming from the commutator of the motor.
 - To reduce the amount of static electricity generated, do not conduct assembling and other work under dry conditions. To reduce the generation of static electricity be careful that the air in the work is not too dried. A relative humidity of 50%-60% is recommended. As far as possible make the electric potential of your work clothes and that of the work bench the ground potential.

The LCD module is coated with a film to protect the display surface. Exercise care when peeling off this protective film since static electricity may be generated.
-

- (13) Since LCM has been assembled and adjusted with a high degree of precision, avoid applying excessive shocks to the module or making any alterations or modifications to it.
- Do not alter, modify or change the shape of the tab on the metal frame.
 - Do not make extra holes on the printed circuit board, modify its shape or change the positions of components to be attached.
 - Do not damage or modify the pattern writing on the printed circuit board.
 - Absolutely do not modify the zebra rubber strip (conductive rubber) or heat seal connector.
 - Except for soldering the interface, do not make any alterations or modifications with a soldering iron.
 - Do not drop, bend or twist LCM.

11.2 Storage Precautions

When storing the LCD modules, the following precaution is necessary.

- (1) Store them in a sealed polyethylene bag. If properly sealed, there is no need for the dessicant.
- (2) Store them in a dark place. Do not expose to sunlight or fluorescent light, keep the temperature between 0°C and 35°C.
- (3) The polarizer surface should not come in contact with any other objects. (We advise you to store them in the container in which they were shipped).

11.3 Others

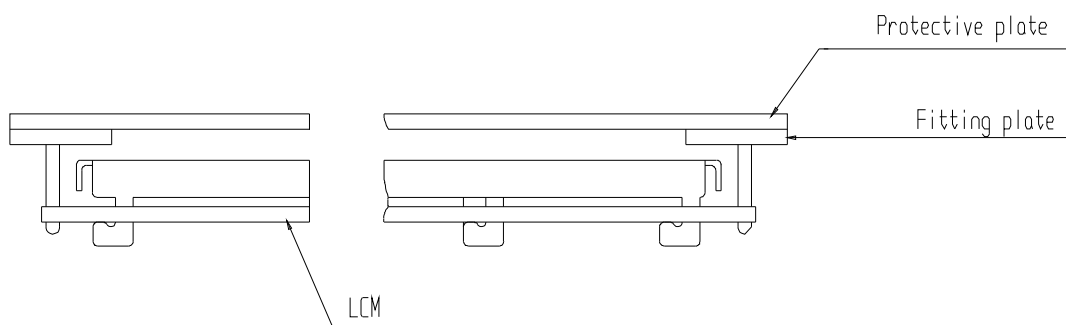
- (1) Liquid crystals solidify under low temperature (below the storage temperature range) leading to defective orientation or the generation of air bubbles (black or white). Air bubbles may also be generated if the module is subject to a low temperature.
- (2) If the LCD modules have been operating for a long time showing the same display patterns, the display patterns may remain on the screen as ghost images and a slight contrast irregularity may also appear. A normal operating status can be regained by suspending use for some time. It should be noted that this phenomenon does not adversely affect performance reliability.
- (3) To minimize the performance degradation of the LCD modules resulting from destruction caused by static electricity etc., exercise care to avoid holding the following sections when handling the modules.
 - Exposed area of the printed circuit board.
 - Terminal electrode sections.

11.4 USING LCD MODULES

Installing LCD Modules

The hole in the printed circuit board is used to fix LCM as shown in the picture below. Attend to the following items when installing the LCM.

- (1) Cover the surface with a transparent protective plate to protect the polarizer and LC cell.

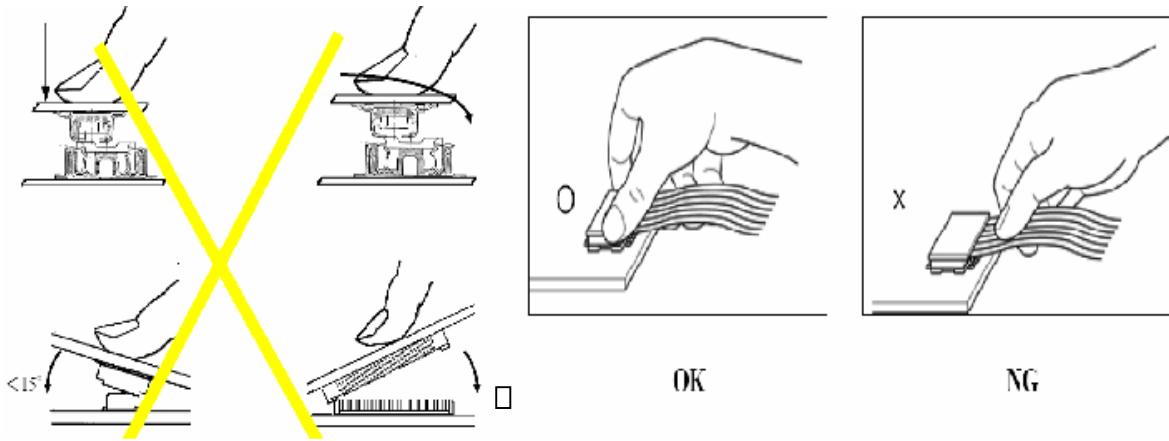


- (2) When assembling the LCM into other equipment, the spacer to the bit between the LCM and the fitting plate should have enough height to avoid causing stress to the module surface, refer to the individual specifications for

measurements. The measurement tolerance should be 0.1mm.

Precaution for assemble the module with BTB connector:

Please note the position of the male and female connector position, don't assemble or assemble like the method which the following picture shows



Precaution for soldering to the LCM

	Hand soldering	Machine drag soldering	Machine press soldering
No ROHS Product	290 C~350 C. Time :3-5S.	330 C ~350 C. Speed : 4-8mm/s.	300 C~330C. Time : 3-6S. Press: 0.8~1.2Mpa
ROHS Product	340 C~370 C. Time:3-5S.	350 C ~370 C. Time : 4-8 mm/s.	330 C~360C. Time : 3-6S. Press: 0.8~1.2Mpa

- (1) If soldering flux is used, be sure to remove any remaining flux after finishing to soldering operation. (This does not apply in the case of a non-halogen type of flux.) It is recommended that you protect the LCD surface with a cover during soldering to prevent any damage due to flux spatters.
- (2) When soldering the electroluminescent panel and PC board, the panel and board should not be detached more than three times. This maximum number is determined by the temperature and time conditions mentioned above, though there may be some variance depending on the temperature of the soldering iron.
- (3) When remove the electroluminescent panel from the PC board, be sure the solder has completely melted, the soldered pad on the PC board could be damaged.

Precautions for Operation

- (1) It is an indispensable condition to drive LCD's within the specified voltage limit since the higher voltage then the limit cause the shorter LCD life. An electrochemical reaction due to direct current causes LCD's undesirable deterioration, so that the use of direct current drive should be avoided.
- (2) Response time will be extremely delayed at lower temperature than the operating temperature range and on the other hand at higher temperature LCD's show dark color in them. However those phenomena do not mean malfunction or out of order with LCD's, which will come back in the specified operating temperature.
- (3) If the display area is pushed hard during operation, the display will become abnormal. However, it will return to normal if it is turned off and then back on.
- (4) A slight dew depositing on terminals is a cause for electro-chemical reaction resulting in terminal open circuit. Usage under the maximum operating temperature,50%RH or less is required.
- (5) Input each signal after the positive/negative voltage becomes stable.
- (6) Please keep the temperature within specified range for use and storage. Polarization degradation, bubble generation or polarizer peel-off may occur with high temperature and high humidity.

Safety

- (1) It is recommended to crush damaged or unnecessary LCDs into pieces and wash them off with solvents such as acetone and ethanol, which should later be burned.
- (2) If any liquid leaks out of a damaged glass cell and comes in contact with the hands, wash off thoroughly with soap and water.

11.5 The disposal of waste

For waste disposal, our recommendations are as follows, please refer to your company, and the relevant provisions of the state laws and regulations of the act accordingly

1. Packing materials disposal for our packaging (carton/PS tray/EPE tray/PET tray)
 - 1) Our company used to recycle and reuse materials, packing materials can be you just need to transfer to material recycling companies
 2. Our scrap module can't be recycled for reuse, so please dispose of:
 - 1) Our scrap module can't be recycled for reuse, products and components are "served" can lead to accidents
 - 2) Our scrap can be transfer to material recycling companies, dismantling, to ensure that scrap in relatively advanced technology products, environmental protection measures of relatively perfect environment for processing.
 3. WEEE order must be executed in product scrap.

12. Prior Consult Matter

1. (1) For YES standard products, we keep the right to change material, process...for improving the product property without notice on our customer.
(2) For OEM products, if any change needed which may affect the product property, we will consult with our customer in advance.
2. If you have special requirement about reliability condition, please let us know before you start the test on our samples.

13. Factory

FACTORY NAME: YES OPTOELECTRONICS DISPLAY CO.,LTD
FACTORY ADDRESS: No.288 Yueling Road Anshan, Liaoning, P.R.CHINA
FACTORY PHONE: 86-412-5211859 FAX: 86-412-5211729